

STG5765EL

Sturm! Sturm!
нас рекомендуют друзья! нас рекомендуют друзья!

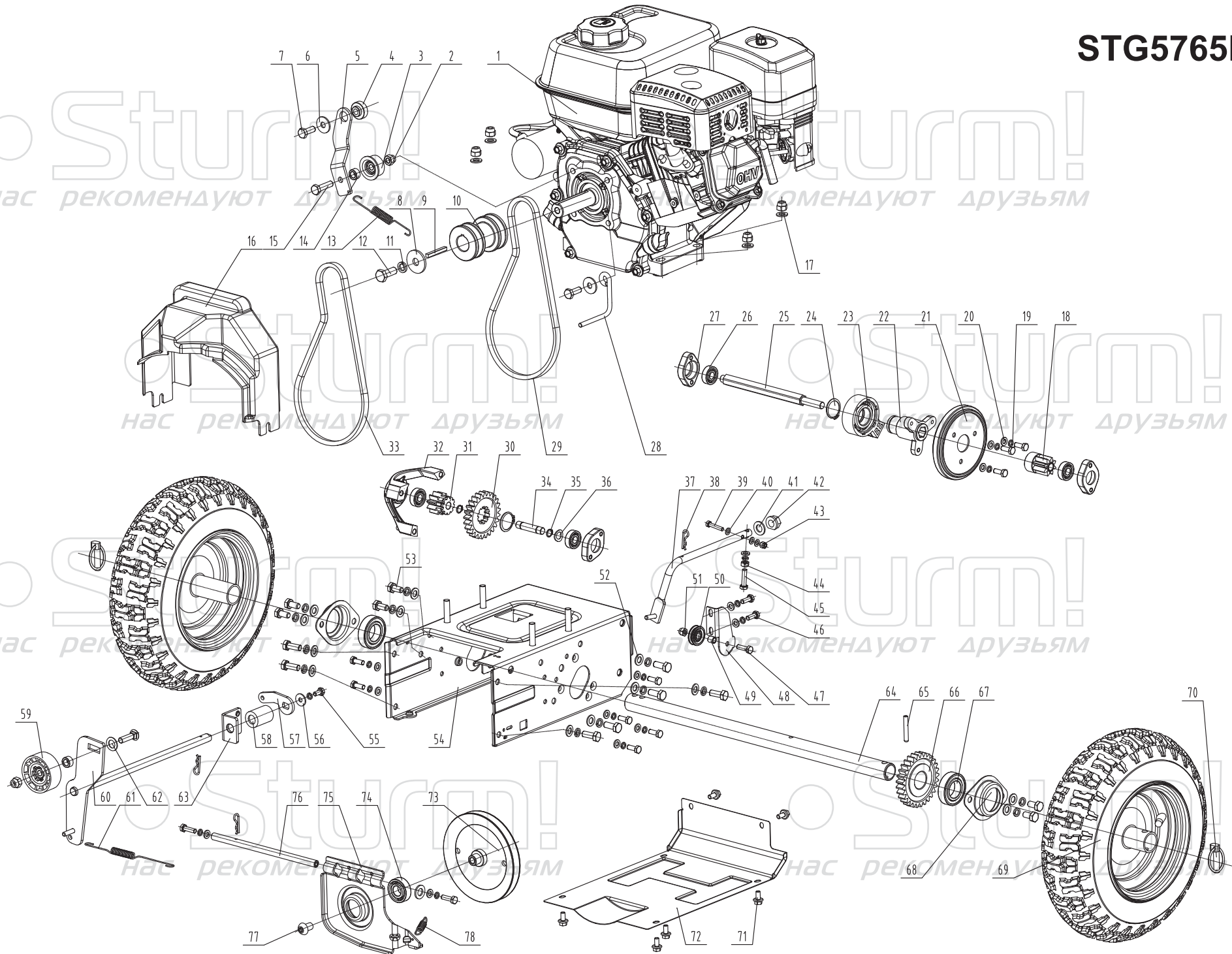
нас рекомендуют друзья!

нас рекомендуют друзья!

Sturm! Sturm!
нас рекомендуют друзья! нас рекомендуют друзья!

нас рекомендуют друзья!

нас рекомендуют друзья!

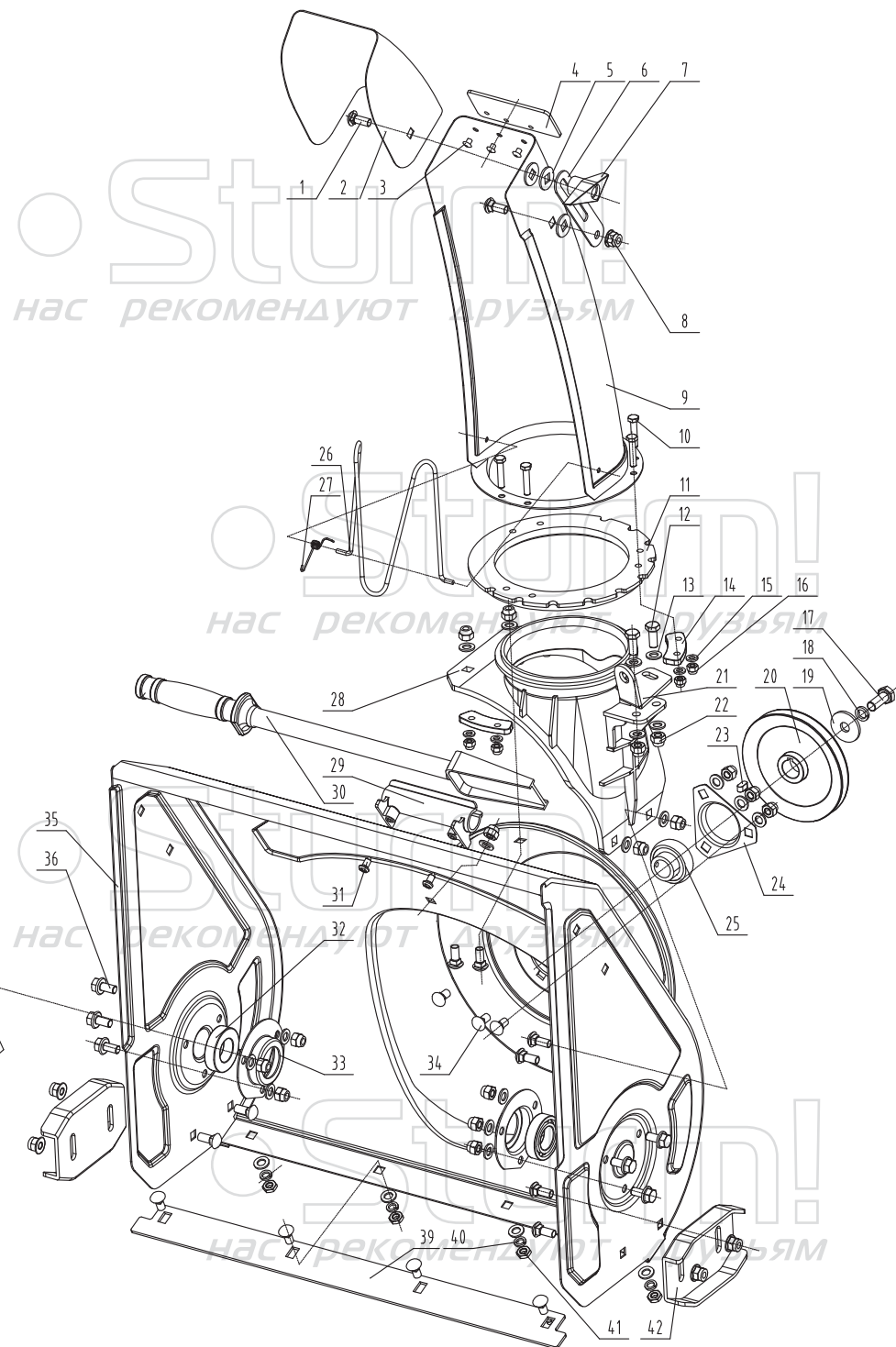
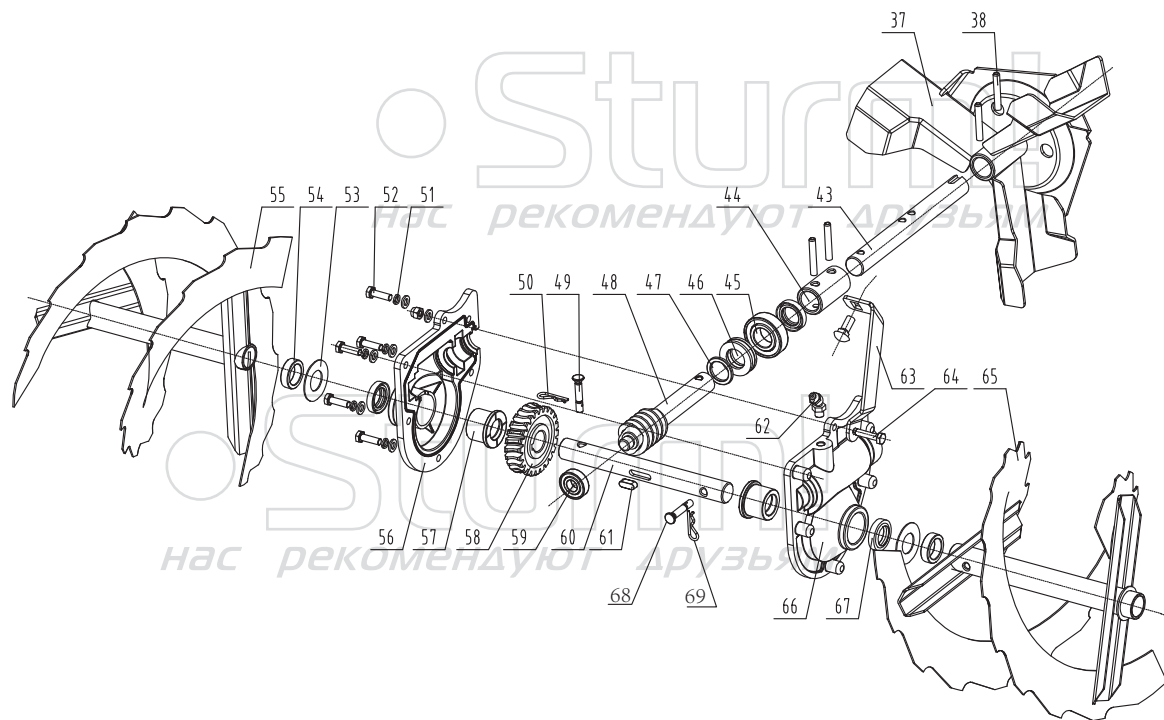


STG5765EL

NO.	DESCRIPTION	NO.	DESCRIPTION
1	ENGINE	40	FLAT WASHER C
2	LOCK NUT	41	FLAT WASHER C
3	TENSIONING WHEEL	42	BUSH
4	TENSIONING WHEEL SLEEVE	43	LOCK NUT
5	TENSION PLATE	44	NUT
6	BIG WASHER C	45	BOLT
7	BOLT	46	BOLT
8	BIG WASHER C	47	BOLT
9	FLAT KEY	48	ROLLER BRACKET
10	ENGINE PULLEY	49	ROLLER SLEEVE
11	STANDARD SPRING WASHER	50	DRAWING ROLLER
12	BOLT	51	NUT
13	SPRING	52	STANDARD SPRING WASHER
14	PLATE SLEEVE	53	BOLT
15	BOLT	54	GEARBOX HOUSE
16	BELT GUARD	55	BOLT
17	FLAT WASHER C	56	BIG WASHER C
18	DRIVING GEAR	57	ROCKER ARM
19	STANDARD SPRING WASHER	58	ROCKER ARM SLEEVE
20	FLAT WASHER C	59	TENSIONING WHEEL
21	FRICTION WHEEL	60	AUGER LEVER
22	SLIDING SLEEVE	61	AUGER SPRING
23	STIR WHEEL	62	SMALL WASHER
24	CIRCLIP A	63	SUPPORTING PLATE
25	SIX ANGLE SHAFT	64	WALKING WHEEL SHAFT
26	BALL BEARING	65	ELASTIC CYLINDER PIN
27	BEARING SEAT	66	DRIVEN GEAR
28	RETAINING ROD	67	BALL BEARING
29	TEETH BELT	68	BEARING SEAT
30	GEAR 25X2.5	69	WHEEL
31	GEAR 10X2.5	70	SHAFT PIN 8
32	BRACKET	71	BOLT
33	BELT	72	GEARBOX END COVER
34	MIDDLE SHAFT	73	WALKING DRIVEN PULLEY
35	CIRCLIP A	74	BALL BEARING
36	WAVE SPRING WASHER	75	OSCILLATING PLATE
37	WALKING LEVER WELDMENT	76	WALKING DRIVEN PULLEY SHAFT
38	B PIN	77	SCREW
39	BOLT	78	SPRING

STG5765EL

Sturm!
нас рекомендуют друзья



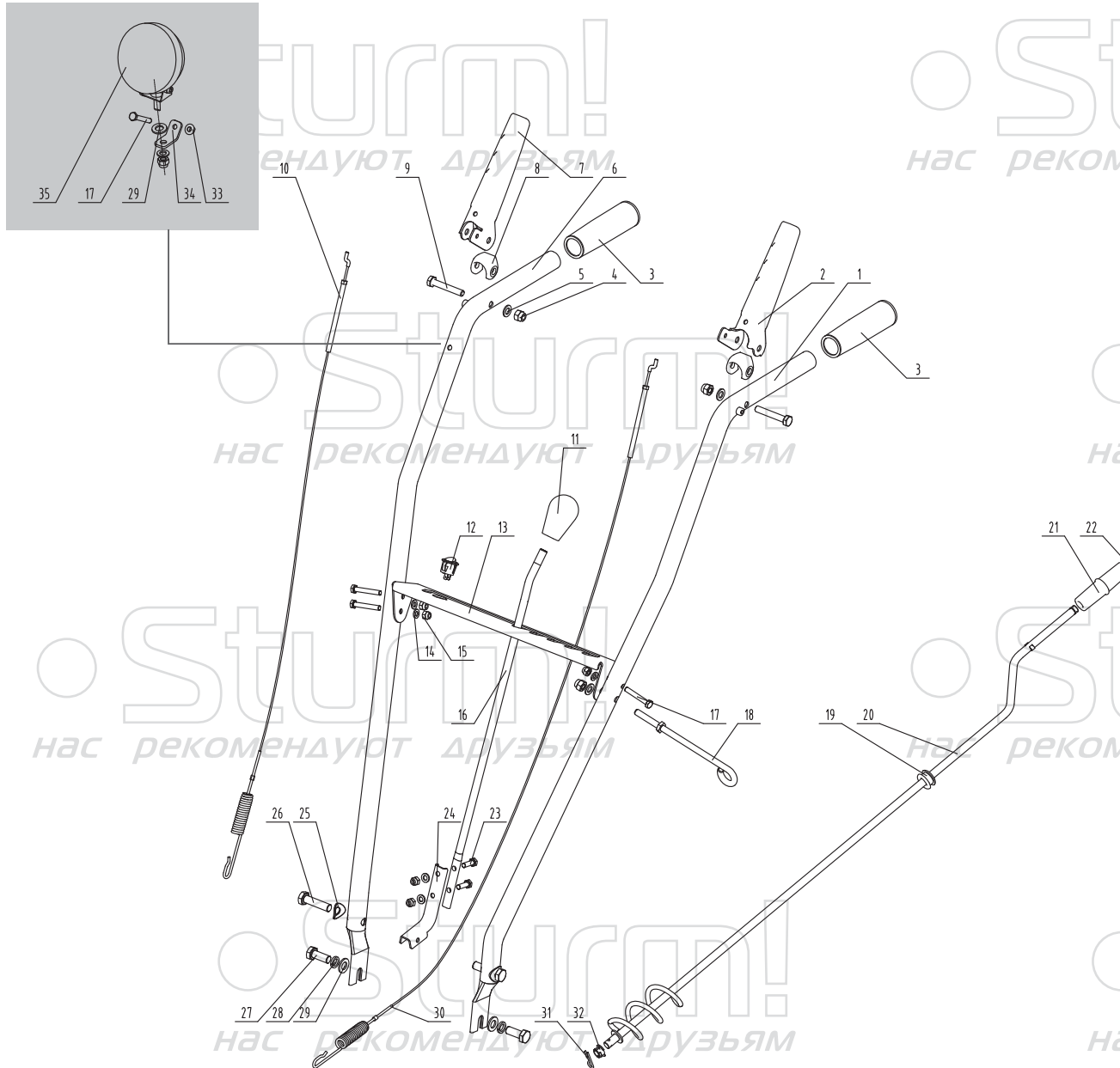
Sturm!
нас рекомендуют друзья

Sturm!
нас рекомендуют друзья

STG5765EL

NO.	DESCRIPTION	NO.	DESCRIPTION
1	BOLT	37	AUGER FAN
2	CHUTE CAP	38	PIN
3	BOLT	39	PLATE
4	RUBBER SNOW BLOCK PLATE	40	WASHER C
5	FIXING PAD	41	NUT
6	CHUTE CAP ADJUSTING PLATE	42	SKID SHOES
7	NUT HANDLE	43	IMPELLER SHAFT
8	NUT	44	CONNECTING SLEEVE
9	SNOW CHUTE	45	BALL BEARING
10	BOLT	46	SINGLE THRUST BALL BEARING
11	DISK	47	WORM GEAR SLEEVE
12	BOLT	48	INPUT WORM GEAR SHAFT
13	STANDARD SPRING WASHER	49	AUGER FIXING PIN
14	FIXING BLOCK	50	PIN B
15	WASHER C	51	STANDARD SPRING WASHER
16	NUT	52	BOLT
17	BOLT	53	BIG WASHER
18	STANDARD SPRING WASHER	54	SLEEVE
19	BIG WASHER C	55	RIGHT AUGER ASSEMBLY
20	AUGER DRIVEN PULLEY	56	RIGHT GEARCASE ASSEMBLY
21	SUPPORTING PLATE	57	SHAFT SLEEVE
22	NUT	58	WORM WHEEL
23	KEY	59	BALL BEARING
24	BEARING SEAT	60	OUTPUT SHAFT
25	OUTER SPHERICAL BALL BEARING	61	KEY
26	LEVER	62	OIL CUP
27	LEVER SPRING	63	PLATE
28	SNOW CHUTE SEAT	64	BOLT
29	SNOW SHOVEL FIXING SEAT	65	LEFT AUGER ASSEMBLY
30	SMALL SNOW SHOVEL	66	LEFT GEARCASE ASSEMBLY
31	SCREW	67	SEAL RING
32	BALL BEARING	68	SAFE PIN
33	BEARING SEAT	69	COTTER
34	BOLT		
35	AUGER HOUSE		
36	BOLT		

STG5765EL



NO.	DESCRIPTION
1	LEFT HANDLE ARM ASSEMBLY
2	HANDLEBAR - LEFT
3	HANDLE SLEEVE
4	NUT
5	WASHER C
6	RIGHT HANDLE ARM ASSEMBLY
7	HANDLEBAR - RIGHT
8	HANDLE SLEEVE
9	BOLT
10	AUGER TENSIONING CABLE
11	OPERATION LEVER
12	SWITCH
13	GEAR PLATE
14	WASHER C
15	NUT
16	GEAR LEVER
17	BOLT
18	ROD
19	RUBBER SLEEVE
20	ROCKER LEVER ASSEMBLY
21	ROCKER HANDLE
22	CIRCLIP A
23	BOLT
24	SPRING RETURN CLAMP
25	WASHER
26	BOLT
27	BOLT
28	STANDARD SPRING WASHER
29	WASHER C
30	WALKING TENSIONING CABLE
31	PIN B
32	NUT
33	LOCK NUT
34	LIGHT HOLDER
35	LIGHT

RU-ST20180614